



❄️ We Can Build A Snowman ❄️

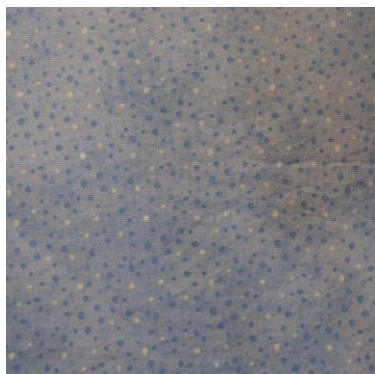
A Block of the Month Program
by Debra Davis
Tuning My Heart Quilts, LLC



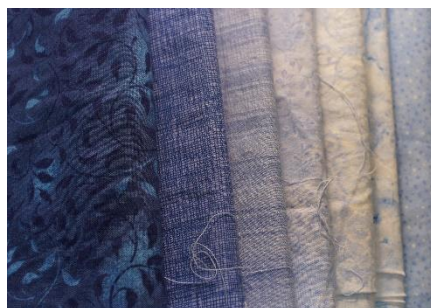
❄️ Choosing Fabric ❄️

Sometimes the hardest part about any quilt project is choosing your fabrics. In this quilt the most important starting point is the background for your snowman. Obviously, a white background will not work. So what do we do? There are so many options when you walk into a fabric store it can all seem a little daunting. Let me share how I approach this. No matter what quilt I am doing I always start with one fabric that will be the one that guides all of my other fabric choices.

I started with the background I liked. When choosing your background you want to be sure that it does not show through the fabric you will be using for your snowman applique on top. Once I settle on my background then I looked for dark, medium, and light blues that went with it. I like to find fabrics that have a depth of color from light to dark in them-it also helps me find more fabrics that go together with my palette.



I keep adding more fabric choices to my selections including some white prints for contrast.



Then for fun I decided a little cream plaid print would be a nice touch. And then I cannot forget my white on whites, a very necessary part of this quilt project.

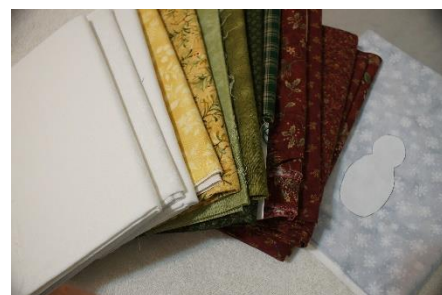


I fell in love with these two gray prints and they found a way into my quilt too.

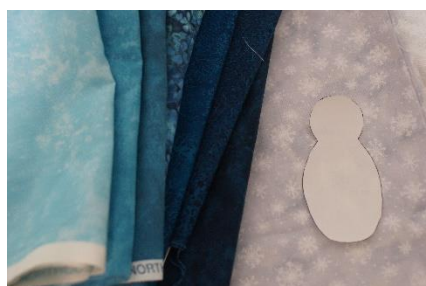


I just keep adding fabrics until I am satisfied with how they all go together-at some point I just have to stop. 😊 For this quilt I want a variety of light, medium, and dark colors (called values) and some white is a must too. (These are not the whites for the applique snowmen-I used a heavy weight gauze for those. If you have trouble finding enough of the different color values that you want, just be sure that your total for that value equals the total of the combined value listed in the fabric requirements. So, let's say my pattern calls for 3 dark shades and I need 1 yard of #1, $\frac{3}{4}$ yards of #2, and $\frac{1}{2}$ yard of #3, but I only find one dark fabric that I like. If I add those three fabric requirements up, $1 + \frac{3}{4} + \frac{1}{2}$ I know that I will need $2 \frac{1}{4}$ yards of the dark fabric I have chosen.

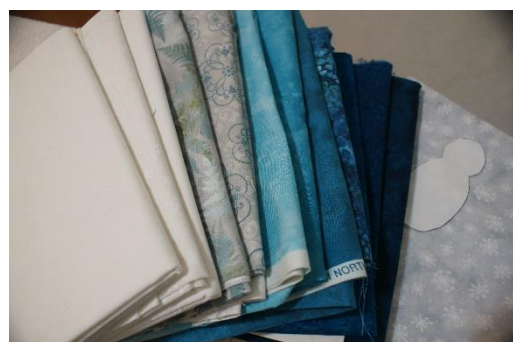
I played with some other combinations from my stash to give you more ideas. This is a grey snowflake print I found which could be used with blues, but what about red? And then if I pop in some green and gold I have a very traditional Christmasy version along with my whites.



And if I take that same snowflake print and go with teals instead....



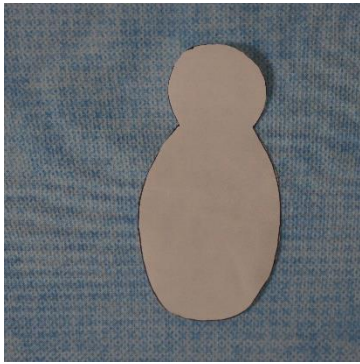
toss in my whites...



....then maybe add a pop of red



and I certainly do not need to stick with a background that reminds me of snow.

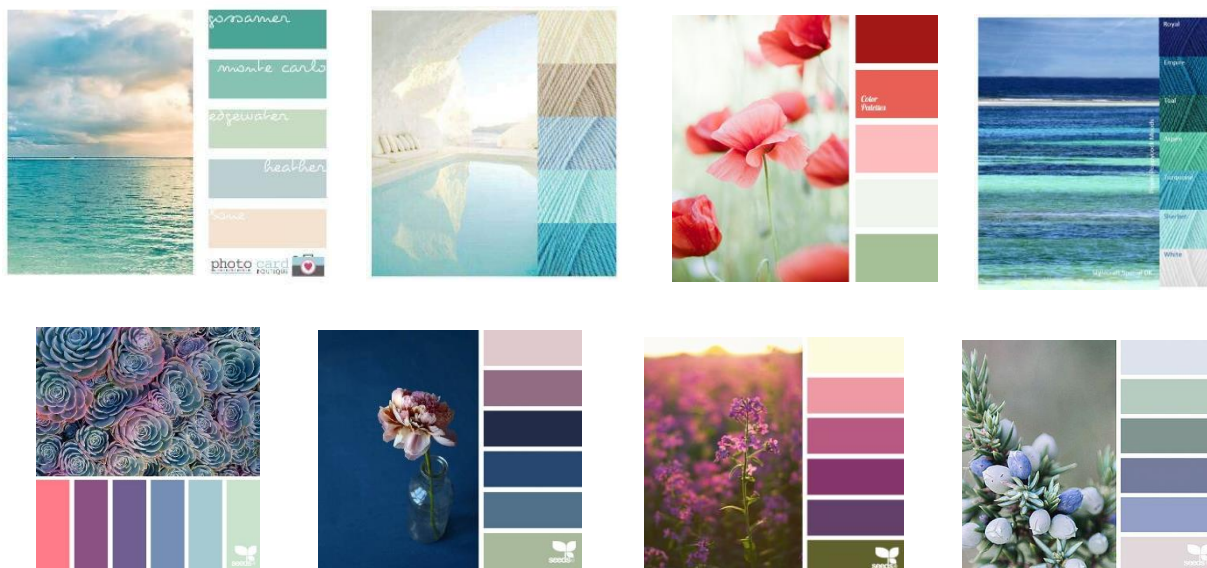


There are just so many fun combinations of color one could choose. I can spend almost as much time looking at color palettes on Pinterest than in a fabric store with all the lovely fabrics. Here are just a few more ideas to get your creative juices going as you think about the fabric you would like to use in your We Can Build a Snowman quilt.

Christmas/Winter themed palettes:



Nature inspired palettes:



Sometimes you just fall in love with a fabric collection and all of the work of choosing fabrics to go together has been done for you. Or maybe one fabric caught your attention and you can use it to look for coordinating colors.



Whatever you choose, I hope this has given you a few ideas and a little more confidence to go out and pick up your fabrics. Begin to look for color inspiration around you and you will soon be bursting with ideas for your next quilt

Debra